



Be prepared.

Card JSC 230



Saurer pre-spinning is the foundation of the Zinser Ring Spinning and Schlafhorst Open End Systems. The flexible portfolio offers the right solutions for preparation of all kinds of fibres for the subsequent processes. The right combination of blowroom, carding and draw frame ensures excellent fiber utilization and sliver quality for high efficiency and yarn quality in spinning.

E³: Optimising energy, economics and ergonomics, adding intelligence. With our customers' needs always top of mind, E³ forms the basis of our design philosophy. Our passion for textile machinery drives us to manufacture innovative products that add value to our clients' businesses.

 Contents

 4
 Highlight

 5
 Economics

 6
 Typical Blow-carding
 Process

 8
 Be prepared

 11
 JSC 230 Technical data

 14
 Sun

Highlights

- **Single or triple licker-in for flexible process**
- **Prime components for lower energy consumption**
- **Optimized airflow for higher efficiency waste suction**
- **Long Term and Short Term Autolevelling for an excellent sliver quality**
- **Seamless can change for higher quality and higher production**
- **Mill Management system Senses for analyzing all spinning data in one program – in real time, safely and from anywhere**

Economics

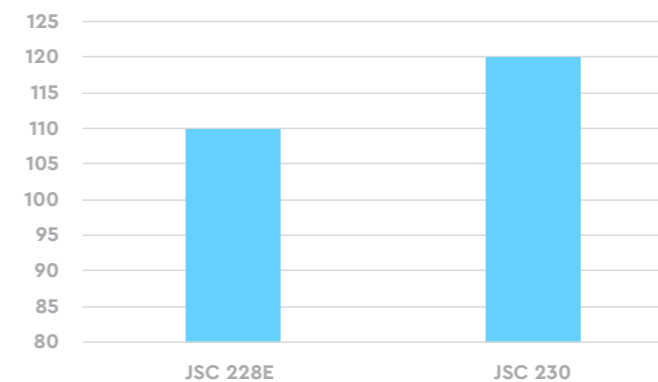
Economics

- **Up to 20% more productivity**
- **Up to 2.82m² carding area**
- **Space saving and less energy cost**
- **Less maintenance cost in production**
- **Reduced workload**

Through cutting-edge research and development, we boost our clients' profitability by improving our products' flexibility, increasing output and saving on raw material. Increasingly, our machines are also becoming smarter, reducing the need for human involvement, which allows our customers to save on cost.

Productivity

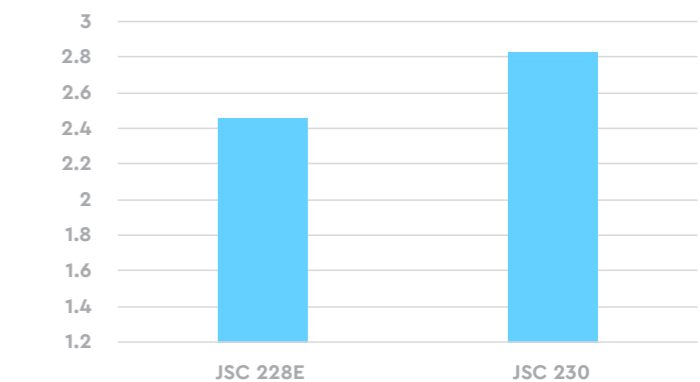
Unit: kg/h



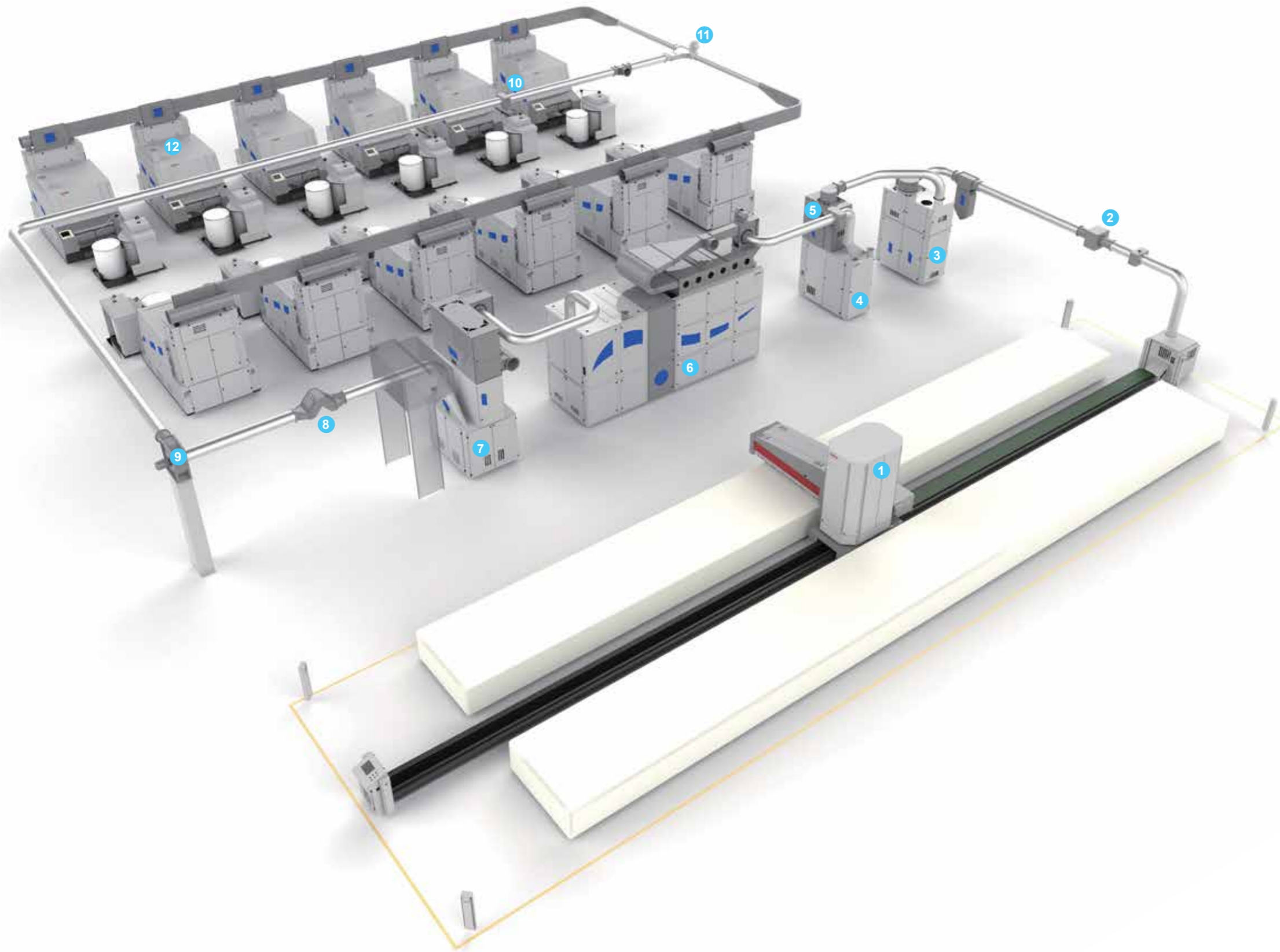
● Productivity

Carding area

Unit: m²



● Carding area



- | | |
|-----------|--|
| 1 | JSB 008C Reciprocating Bale Plucker |
| 2 | 119MT-6000/119MD5 Spark&Metal Dual Separator |
| 3 | FA100 Multi-function Air-flow Tower |
| 4 | JSB 103 Mono-axial Flow Opener |
| 5 | 119E Spark Separator |
| 6 | JSB 325 Multi-mixer |
| 7 | JSB 318 Fine Opener |
| 8 | TF27 Magnet Trap |
| 9 | JFA020A Transport Fan |
| 10 | 119E Spark Separator |
| 11 | TF80 T Shape Distributor |
| 12 | Card JSC 230/A |



Be prepared

Saurer JSC 230 is optimized on the basis of card JSC 228E and integrates the innovative highlights of the intelligent Autocard. It can fully meet the spinning requirements of flexible configuration of differentiated fibers, and achieve the maximum output, which is more intelligent and more economical.

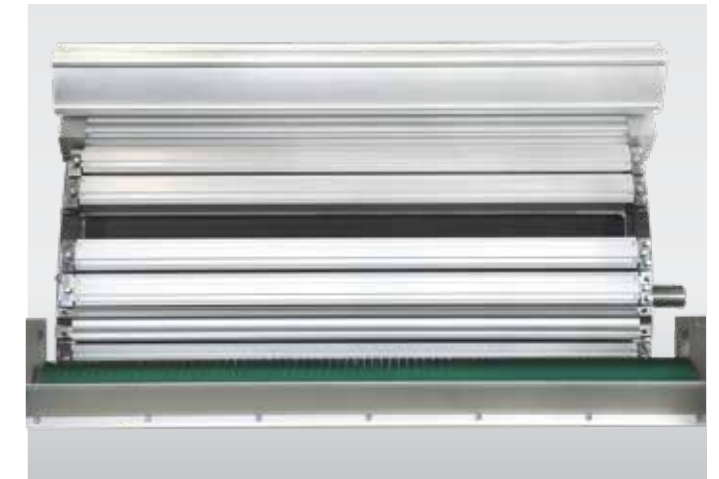
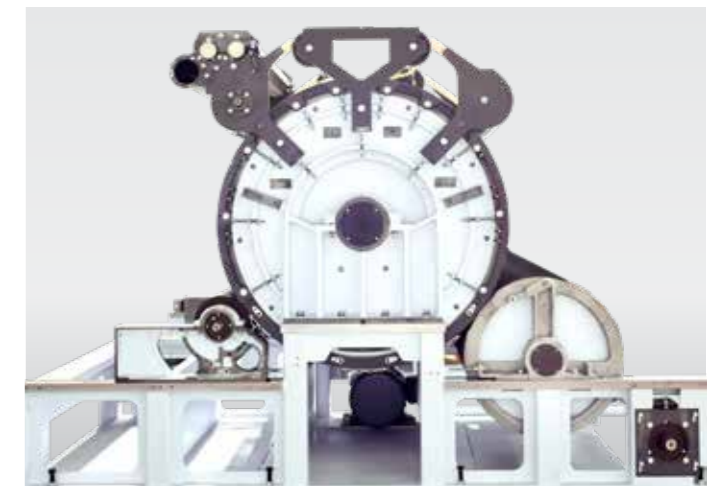
The right combination of blow room and carding ensures excellent fiber utilization and sliver quality for high efficiency and yarn quality in spinning.

MD system

Metal Detection System can automatically alarming in case of metal impurity going to carding area, and ensure the machine running safety.

Prime components

Thanks to higher precision of key components including cylinder, doffer and electric components etc., minimum power consumption can be ensured. In addition, inverter motors are widely used so that pulley changing is no longer necessary during technology adjustment.



Optimized air flow

With the characteristics of smooth and fluency, the visible filter pipe is good in suction effect and easy for maintenance. All the ports can be sucked continually and the pressure can be monitored all the time.

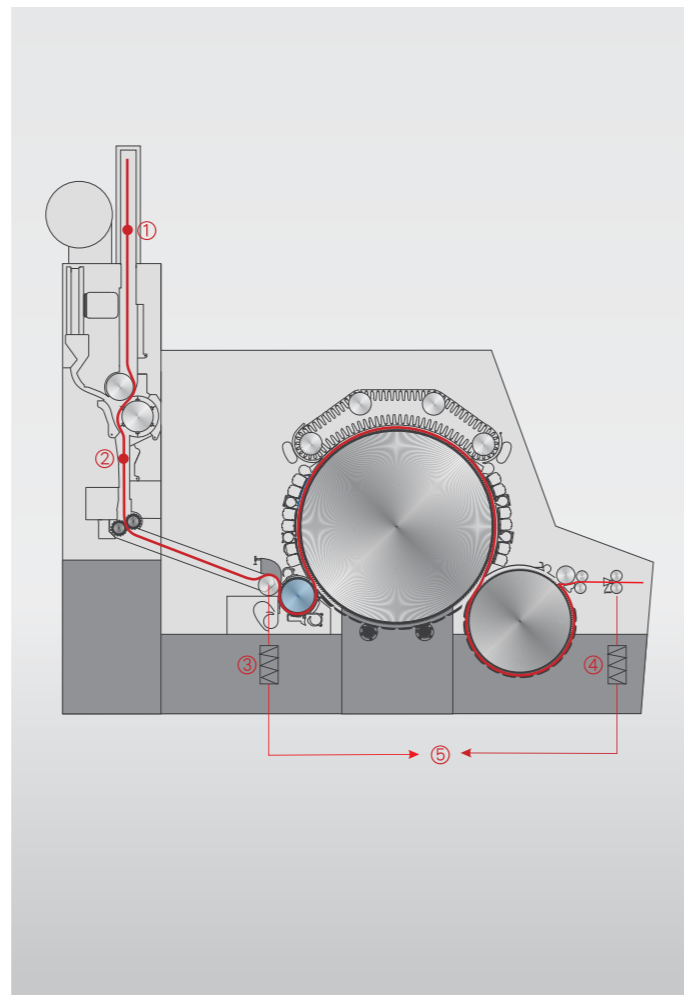
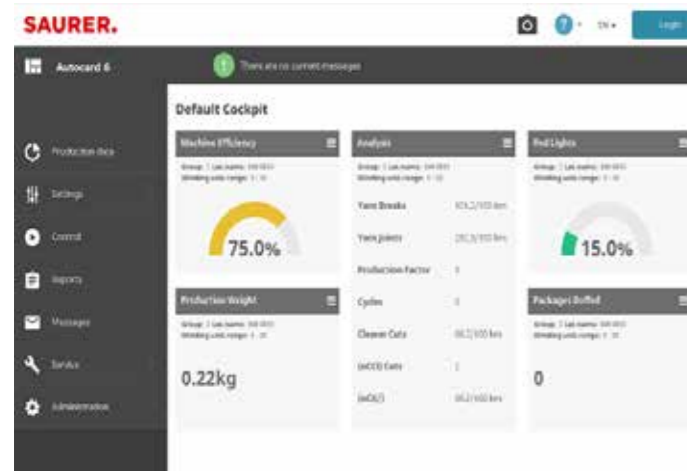
Customized feeding direction

In order to meet the spinning production requirements of different quality and output, JSC 230 carding machine can provide customers with two kinds of cotton feeding methods: forward feeding, fiber bundle leaving from the gripper formed by feeding roller and feeding plate is more smooth, so as to reduce fiber damage; reverse feeding is more favorable for holding fiber bundle to ensure opening and carding of fiber.

Heightened cylinder

Arc length of carding section is lengthened, which is suitable for optimized quantity of stationary flats and web cleaner. Pre-carding action is strengthened and the quality of sliver is outstanding.

With widened and heightened cylinder, the active carding area is increased 60% more compared to traditional carding machine. Under same carding condition, the production is promoted over 50%. Maximum output can reach 150kg/hour and maximum sliver delivery speed can reach 350m/min.



Stable electric controlling system

With brand new Saurer human-machine interface, all the actions can be controlled precisely by the combination of PLC and Auto-levelling system. The cost of maintenance is reduced with the multiple protecting system.

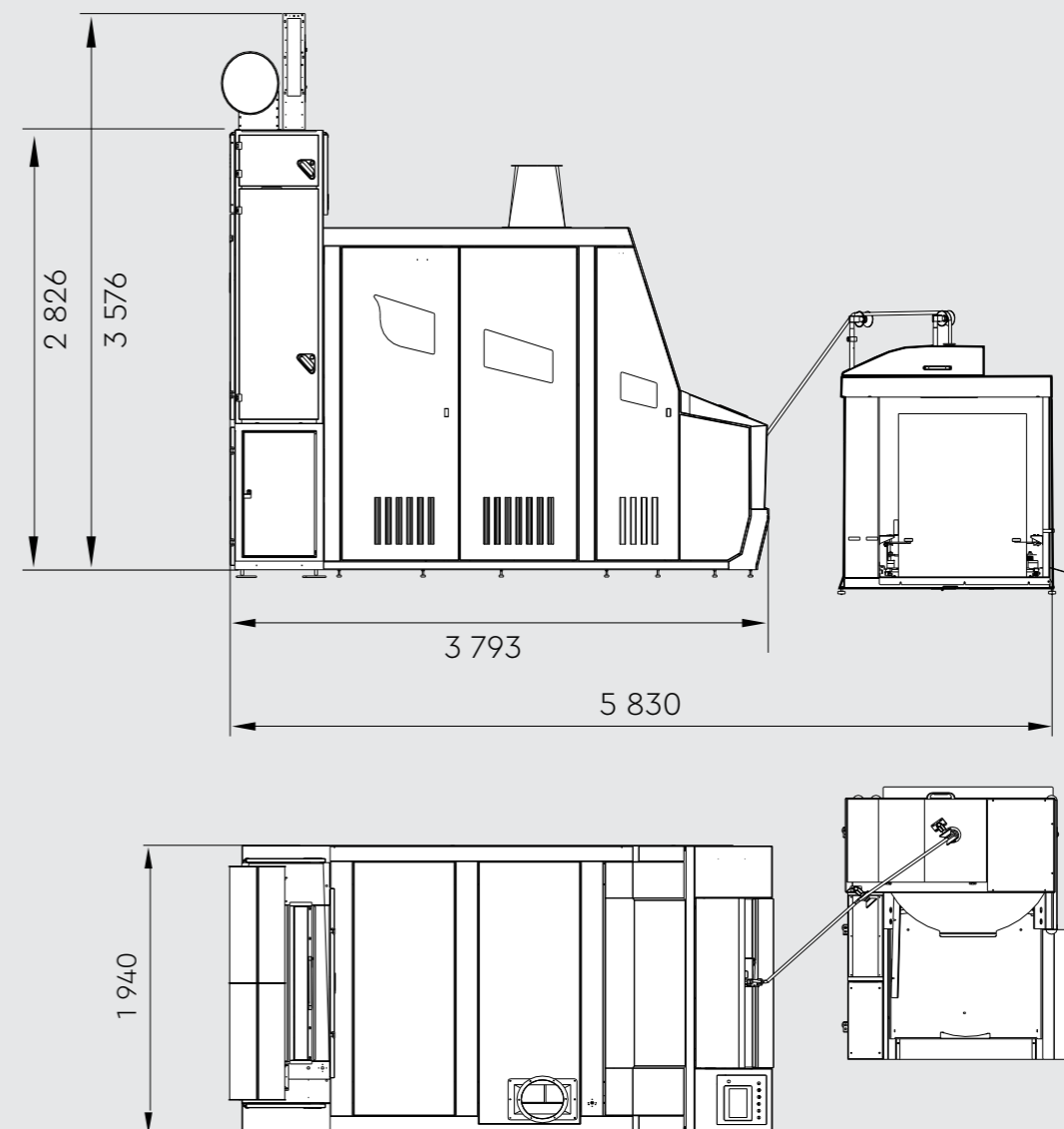
Triple licker-in configuration JSC230A

The impurity ratio of sliver is high when the raw material is machine-harvested cotton. JSC230A is configured with V-sharp triple licker-in, and use the forward feeding structure, can reduce the impurity ratio in sliver effectively. The test result shows the ratio can decrease 15% when use triple licker-in module.

Accurate auto-levelling system

1. Continuous feeding unit JYH306
2. Continuous feeding controlling ensure smoothly cotton feeding
3. Short term autolevelling
4. Long term autolevelling
5. Automatic autoleveller

Four auto-levelling actions work cooperatively, to ensure stable sliver quality and high evenness.



JSC 230/A main features

Workable fiber	22~76mmcotton and man-made fibers
Max. Delivery speed (m/min)	330
Linear weight of card sliver(g/m)	3.5~8
Cylinder width(mm)	1 020
Actual max. production(kg/h)	120
Lap weight (g/m)	340~800
Lap width(mm)	920
Cylinder revolution(r/min)	4 speeds
Doffer revolution(r/min)	up to 150
Licker-in revolution (r/min)	761~1 313
First licker-in(triple licker-in) (r/min)	643~1 089
Second licker-in(triple licker-in) (r/min)	863~1 526
Third licker-in(triple licker-in) (r/min)	1 325~2 011
Q'ty of aluminum alloy revolving flats	84 pcs
Revolving flats speed(mm/min)	V=5.02f frequency converter
Waste extraction air(m ³ /h and Pa)	4 000/-800
Installed power (kW)	14.86 (including coiler and hopper)
Net weight (kg)	6 500
Coiler specification(mm)	Diameter (Φ450,Φ600,Φ900,Φ1 000) x Height (1 050,1 100,1 150,1 200,1 250,1 300)
Overall diameter (L×W×H mm)	3 793×1 940×2 826

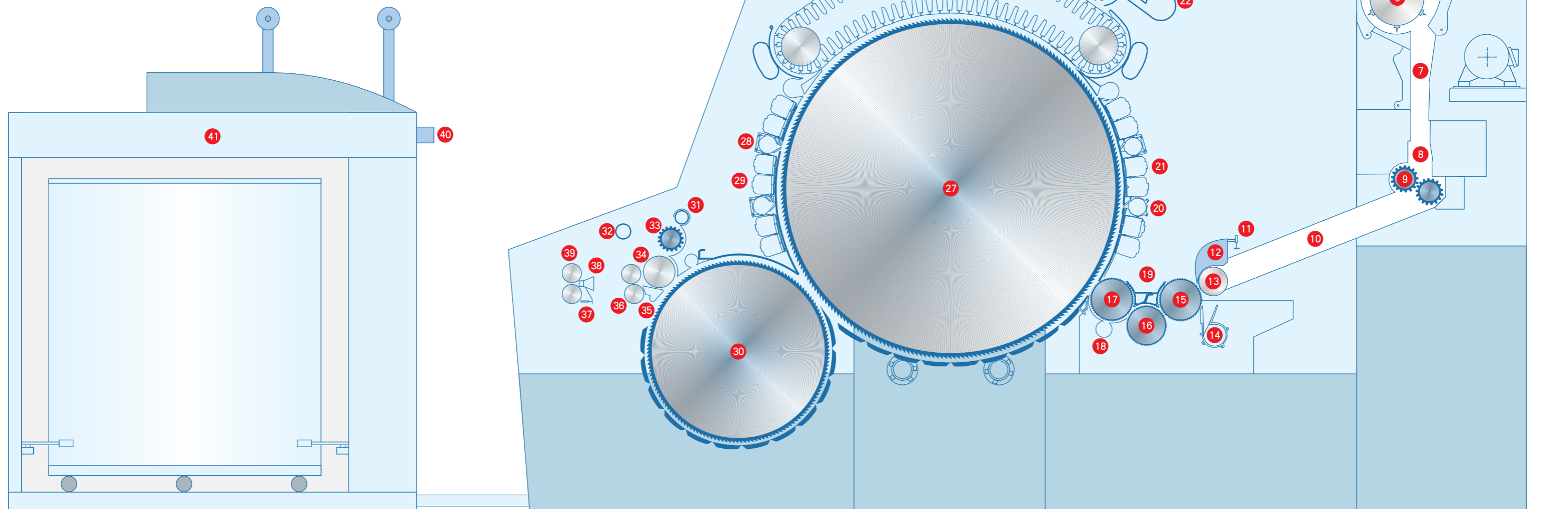
JSC 230A structure diagram

Chute feeder unit

- 1 Top chamber
- 2 pipe of dust exhaust
- 3 fan
- 4 feed plate
- 5 feed roller
- 6 opening beater
- 7 pressure monitoring spot
- 8 Bottom chamber
- 9 output roller
- 10 Material transporting plate

Carding machine section

- 11 feeder sensor
- 12 feed plate
- 13 feed roller
- 14 suction hood of licker-in 1st waste collection area
- 15 1st licker-in (Optional single licker-in)
- 16 2nd licker-in
- 17 3rd licker-in
- 18 suction hood of licker-in 2nd waste collection area
- 19 Cover
- 20 rear web cleaner
- 21 rear stationary flats
- 22 suction hood of flat flyer
- 23 brush roller
- 24 flat brush
- 25 flat end brush
- 26 revolving flats
- 27 Cylinder
- 28 front web cleaner
- 29 front stationary flats
- 30 doffer
- 31 suction hood of three-roller
- 32 web cleaner suction port
- 33 Cleaning roller of three-roller
- 34 stripping roller
- 35 web bed plate
- 36 crushing roller
- 37 trumpet displacement sensor
- 38 trumpet
- 39 calender roller
- 40 suction port of coiler
- 41 coiler



Sun



Saurer sets the benchmarks with:

- **Consulting**
- **Installation**
- **Academy**
- **Original Parts**
- **Maintenance**
- **Updates and Upgrades**

Sun – Service Unlimited

Strong and reliable life-cycle partnership.

Unique smart solutions to increase the benefit to the customer.

Notable performance and sustainability throughout the machine lifetime.

Sun is a bundle of differentiated services that add real value to Saurer machinery throughout its entire life cycle. Highly trained staff using state-of-the-art tools improve our customers' daily operations in a flexible and individual way. We provide the owners of Saurer machinery with innovative solutions and services to improve the product quality, machine performance and profitability.

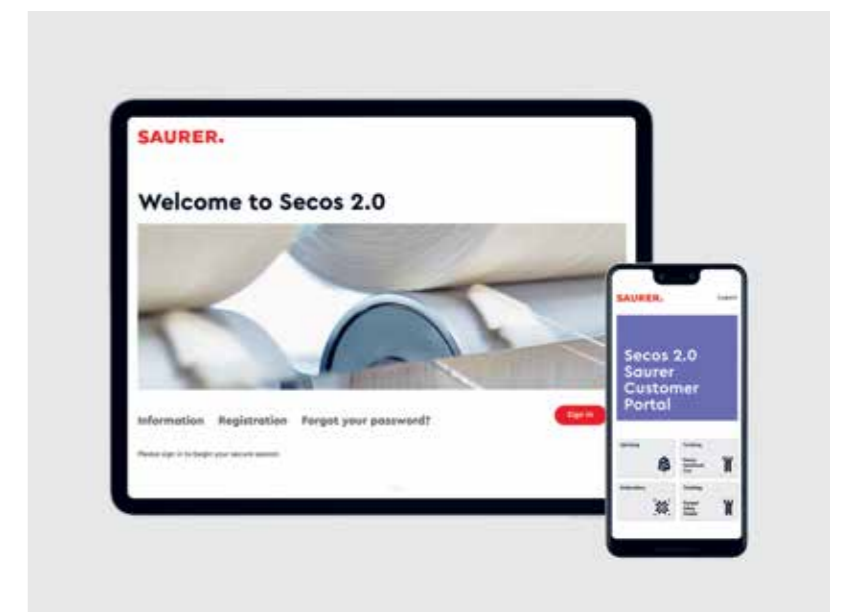
We keep you competitive.

Secos

Saurer Customer Portal

The modular Secos 2.0 customer portal packages all important information about the customer's machine park as well as the services available.

- Order Saurer original parts quickly through the Secos e-shop. The most common wear parts for each machine type can now be found more easily with photo catalogues.
- Find instead of searching: all your data, all your machines, all your original parts at a glance
- Convenient order management with order history going back 5 years
- Quick finder functions with one-click buttons for favourites and current Saurer offers



Saurer (Changzhou) Textile
Machinery Co., Ltd.
558 Huixian Road, Jintan District,
Jiangsu Province
P.R.China 213200
T +86 519 82314836
info.service@saurer.com
saurer.com



Our quality management system
complies with the requirements of
EN ISO 9001.



Regarding this brochure
Research and development never
stand still. This may mean that some
statements about the JSC 230 have
been rendered obsolete by technical
progress. The illustrations have been
selected for information purposes only.
They may show special equipment
which is not included in the standard
scope of supply.